

# **Notice of Commencement**

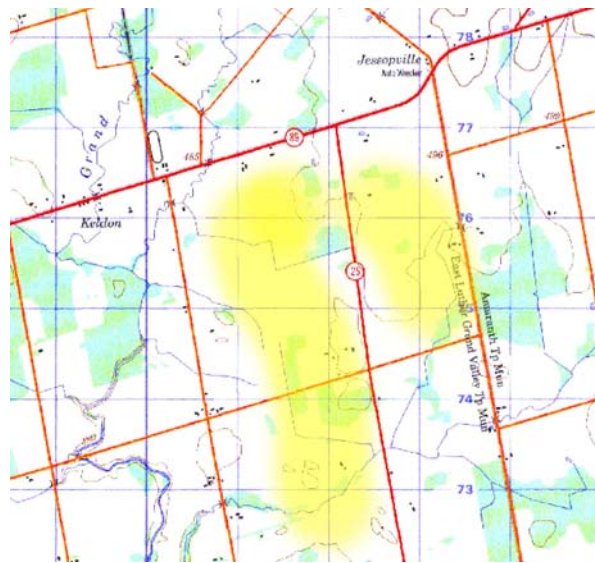
## **10.0MW Wind Turbine Projects East Luther Grand Valley Township**

**Grand Valley Wind Farms Inc.** is proposing to construct two projects of four to six wind power turbines each for a maximum of 10.0MW each on up to 822 acres of agricultural land it has leased in the Township of East Luther Grand Valley. As a requirement prior to construction, the project is subject to the Ministry of the Environment's Environmental Screening Process for Electricity projects over 2.0MW.

These projects will be located on the Lots 29 to 32, Concessions 12 to 14, Township of East Luther Grand Valley, County of Dufferin. Following is the project's location & site map:

### **Grand Valley Wind Farm II Projects**

South of Highway 89 & North of concession 10-11 &  
West of the Amaranth East Luther Townline



**Circulation of the Draft Environmental Assessment will be made available upon completion of the field work in 2007 and at a public meeting at a future date to be announced;** or, if you would like more information about the project, please visit <http://www.windrush-energy.com> or wish to comment on the project, please contact one of the following:

John Nicholson  
Environmental Business Consultants  
33 Wantia Road  
Mississauga, Ontario L5G 1L3  
905-271-2845

J.C. Pennie, Chairman  
Windrush Energy  
3042 Concession Road 3 Adjala, RR1  
Palgrave, Ontario L0N 1P0  
905-729-0060